

TINY HOMES

**Built To Code - A277
Canadian Certified**



A **CAVCO** COMPANY

fairmonthomes.com

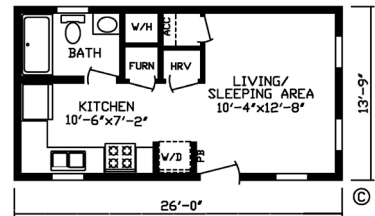


TINY HOMES

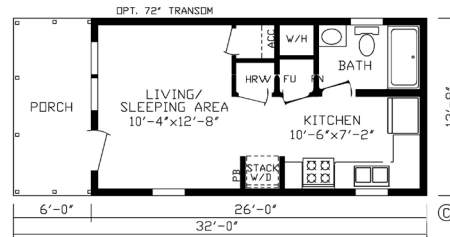
**Built To Code - A277
Canadian Certified**



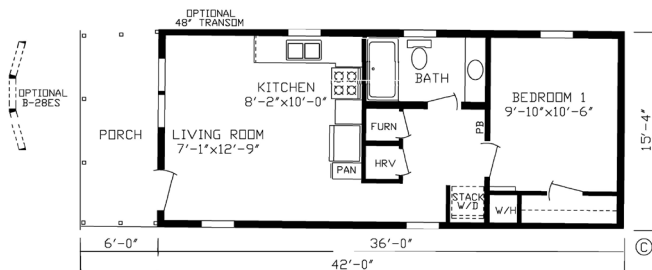
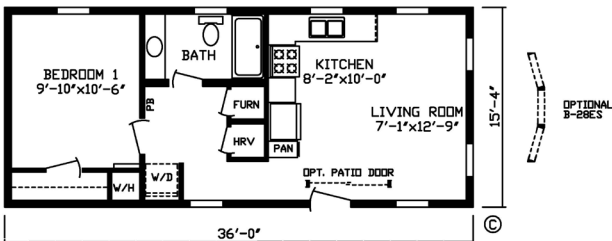
**Model #147058
Size 357 Sq. Ft.**



**Model #147060 (with 6' Porch)
Size 357 Sq. Ft.**



**Model #147055
Size 551 Sq. Ft.**

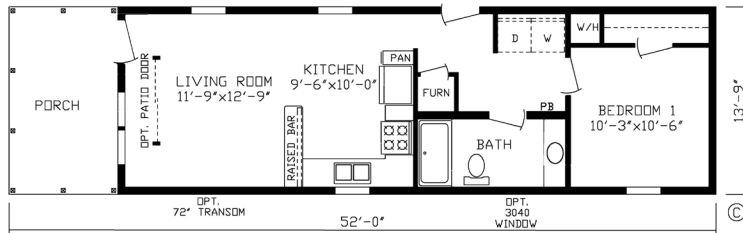
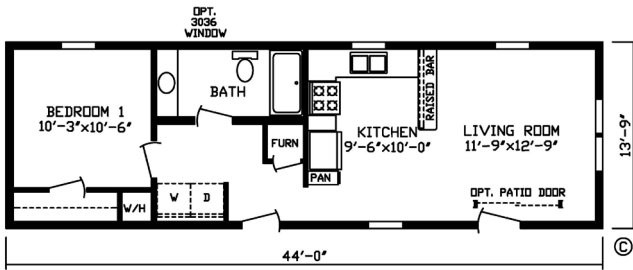


**Model #147061 (with 6' Porch)
Size 551 Sq. Ft.**

TINY HOMES

Built To Code - A277
Canadian Certified

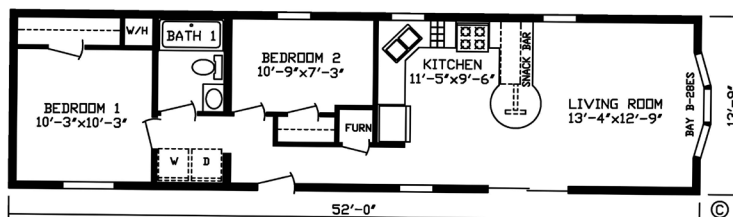
Model #147052L
Size 605 Sq. Ft.



Model #147057 (with 8' Porch)
Size 605 Sq. Ft.



Model #147029L
Size 715 Sq. Ft.



STANDARD FEATURES

Built To Code - A277
Canadian Certified

TINY HOMES

ENERGY SAVINGS

- Kinro® Low E Non-Gridded Thermopane Windows
- HomeGuard™ Exterior Weather Wrap
- OSB Exterior Sheathing, Sidewalls & Endwalls
- 6 Mil Vapor Barrier at Exterior Walls
- R-50 Roof Insulation
- 2X6 Sidewalls w/R-24 Sidewall Insulation
- R-31 Floor Insulation
- Trane® 95% Plus High Efficient Furnace
- Perimeter Heat
- Zone 1 Region Specifications

EXTERIOR & CONSTRUCTION

- 8' Sidewall Height w/Flat Ceilings
- 60 lb Ground Snow Load
- 2X10 Floor Joists 16 O.C.
- 19/32 OSB Tongue & Groove, Glued & Screwed 4' x 8' Floor Decking
- Shutters, Doorside & Hitchend
- 4-1/2" Dutch Lap Vinyl Siding
- Owens Corning® Oak Ridge Pro Shingles
- 1/2" OSB Roof Decking
- Lauan Substrate at Exterior Walls

FLOOR COVERINGS

- Shaw® 25 oz Polyester Carpet
- Congoleum® Linoleum (Foyer, Kitchen, Dining Room, Utility, Bathrooms)
- 5 Pound Rebond Carpet Pad
- Tack Strip Carpet Installation

ELECTRICAL

- 100 Amp Breaker Box
- (2) Exterior GFI Weather Resistant Receptacles
- Humidistat Installed
- LED Can Lights Standard

PLUMBING

- 50 Gallon Electric Water Heater w/ Double Element
- 7" Stainless Steel Kitchen Sink
- Water Shut Off Valves At Sinks & Commodes
- Main Water Shut Off In Water Heater Compartment
- Frost Free Faucet
- Pex Water Line System
- Plumb For Washer & Dryer Bathrooms
- 1-Piece Fiberglass Tubs
- Elongated Commodes
- Porcelain Sinks
- Mirror Above Each Bath Lav
- Cosmetic Light Above Mirror In Baths

CABINETRY

- 40" Overhead Custom Designed Kitchens
- Shaker Rustic Shore Mortise & Tenon Cabinet Doors
- Hardwood Cabinet Stiles — Pre-Drilled & Screwed
- Adjustable Hidden Hinges
- 3-1/2" Crown Molding Above Kitchen Cabinets
- Formica Edging in Kitchen
- High-Pressure Laminated Countertops & Backsplash
- Drawer Above Base Cabinets in Kitchen
- Cabinets over Refrigerator
- Breaker Box Cover
- Dovetail Drawer

DECOR

- Madison Drape Package
- 1" Mini-Blinds
- 2-1/4" Door & Window Casing
- 3-5/8" Ceiling Cove in Living Areas
- Brushed Nickel Hardware & Cabinet Pulls
- 1/2" Vinyl on Gypsum Walls
- Stippled Ceiling

DOORS

- 38x82 White Decorator Front Door w/ Storm & Deadbolt
- 34x82 White Decorator Rear Door w/ Storm & Deadbolt
- 2-Panel White Interior Doors
- Furnace Door

APPLIANCES

- 18 CF SS Frost Free Refrigerator
- 30" SS Standard Clean Gas Range w/ Shut Off
- SS Dishwasher



A **CAVCO** COMPANY
fairmonthomes.com

2181 East Market Street
Nappanee, IN 46550



TINY HOMES for CANADA

All descriptive representations of products in this brochure are believed to be accurate at the time of publication. However, due to product improvements and changes in suppliers, design and product may vary. Some optional items shown and some images depicted in this brochure show porches, garages, or breezeways that are built on-site by others. © Fairmont Homes, LLC. Rev. 03-01-2024.